

Yamato[®]

AZ8400 Class

Complete Cylinder Bed Overlock Machine

***YAMATO Complete Cylinder Bed Overlock Machine
Allows Easier Sewing for Tubular Operation!***



Small Cylinder to Perform Smooth Sewing

This unique and complete cylinder bed allows smooth and easy sewing even for tubular operation of small diameter such as attaching sleeves and hemming cuffs of the garments. And also it allows the material to run smoothly after sewing.

The circumference of this cylinder bed is only 6 inches (151.5mm).

Quick Change of Stitch Length by Push-Button

To make changing of stitch length, it is only necessary to rotate handwheel while pressing Push-Button. Desired stitch length is obtainable quickly and easily.

Quick Change of Differential Feeding Ratio

Only by adjusting lever, desired differential ratio can be performed to match various material to be sewn. Adjusting lever is located on the back side of the machine and the position of the lever ensures to prevent the material from catching it.

Sewing Speed up to 8,000 s.p.m.

The machine has not only unique designed cylinder bed but also super high speed sewing capability for higher productivity. Its maximum sewing speed is 8,000 s.p.m.* (*Depending on the material and sub-model)

Cloth Plate also available as option

The machine can be fitted with optional cloth plate for general sewing operation as desired.

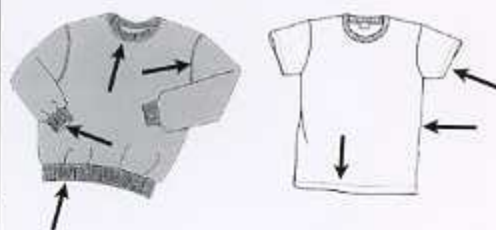


AVAILABLE MODELS

- AZ8400 : Single needle overlock machine, equipped with swing-out hemming guide.
- AZ8400/TC/CH20 : Single needle overlock machine, equipped with seam sensing device for blind hemming and one touch thread tension controller.
- AZ8403 : Single needle overlock machine for general tubular operation.
- AZ8420 : 2 needle overlock machine for general tubular operation.

Submodels / Specifications

		gauge	↓	↓	↓	↓	↓	↓	↓	↓	↓
AZ8400		O3	1	3	-	3	1-3		1:0.8 - 1:2.3	6	8000
AZ8400/TC/CH20		O4									
AZ8403											
AZ8420		Y4 Y5	2	4	2.4	4 5	1-3		1:0.8 - 1:2.3	6	7500



Each model can be fitted with automatic thread chain cutter (K2), automatic label setter (NAS) and other labor saving device as desired.

Specification and appearance on this catalogue are subject to change without notice. For correct handling of products described in this catalogue, please read instructions carefully before operation.

YAMATO SEWING MACHINE MFG. CO., LTD.
<http://www.yamato-sewing.com>

YAMATO U.S.A. INC.
 YAMATO EUROPE GmbH.
 YAMATO (HONG KONG) CO., LTD.
 YAMATO (香港) 有限公司 东莞代表处
 大和缝纫机(宁波)有限公司
 大和缝纫机制造株式会社 青岛事务所
 大和缝纫机制造株式会社 上海事务所
 YAMATO SINGAPORE PTE LTD.
 YAMATO SINGAPORE PTE LTD, INDIA LIAISON OFFICE, TIRUPUR MAIN BRANCH
 YAMATO SINGAPORE PTE LTD, INDIA LIAISON OFFICE, DELHI BRANCH
 YAMATO MEXICO OFFICE

HEAD OFFICE

4-12, 4-CHOME, NISHI-TENMA, KITA-KU, OSAKA, 530-0047, JAPAN
 TEL:+81-6-6364-5621 / FAX:+81-6-6364-7185 / E-mail:export-dept@yamato-sewing.com

TEL:+1-803-548-0334 / FAX:+1-803-548-0405

TEL:+49-40-355347-0 / FAX:+49-40-354371 / E-mail:sales@yamato.de

TEL:+852-2721-0251 / FAX:+852-2723-0444 / E-mail:yamato@yamato-sewing.com.hk

TEL:+86-769-6231363 / FAX:+86-769-6231362

TEL:+86-574-86800518, 86800558 / FAX:+86-574-86800555 / E-mail:yamato@yamato-china.net

TEL:+86-532-5783175 / FAX:+86-532-5783172

TEL:+86-21-64400017, 64400019 / FAX:+86-21-64400021

TEL:+65-6287-1955 / FAX:+65-6287-1028 / E-mail:yamato@cyberway.com.sg

TEL:+91-421-5333701 / FAX:+91-421-2235822 / E-mail:yamatoadp@rediffmail.com

TEL:+91-11-5160-3280 / FAX:+91-11-5160-3281

TEL:+52-55-5764-9090 / FAX:+52-55-5578-1470